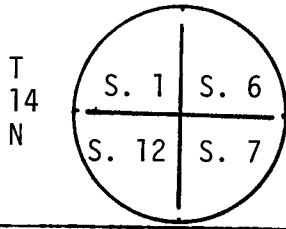


**CERTIFIED LAND CORNER RECORDATION**

R 65 | 64 W DESCRIPTION OF CORNER EVIDENCE FOUND, AND ORIGINAL RECORD (If known)

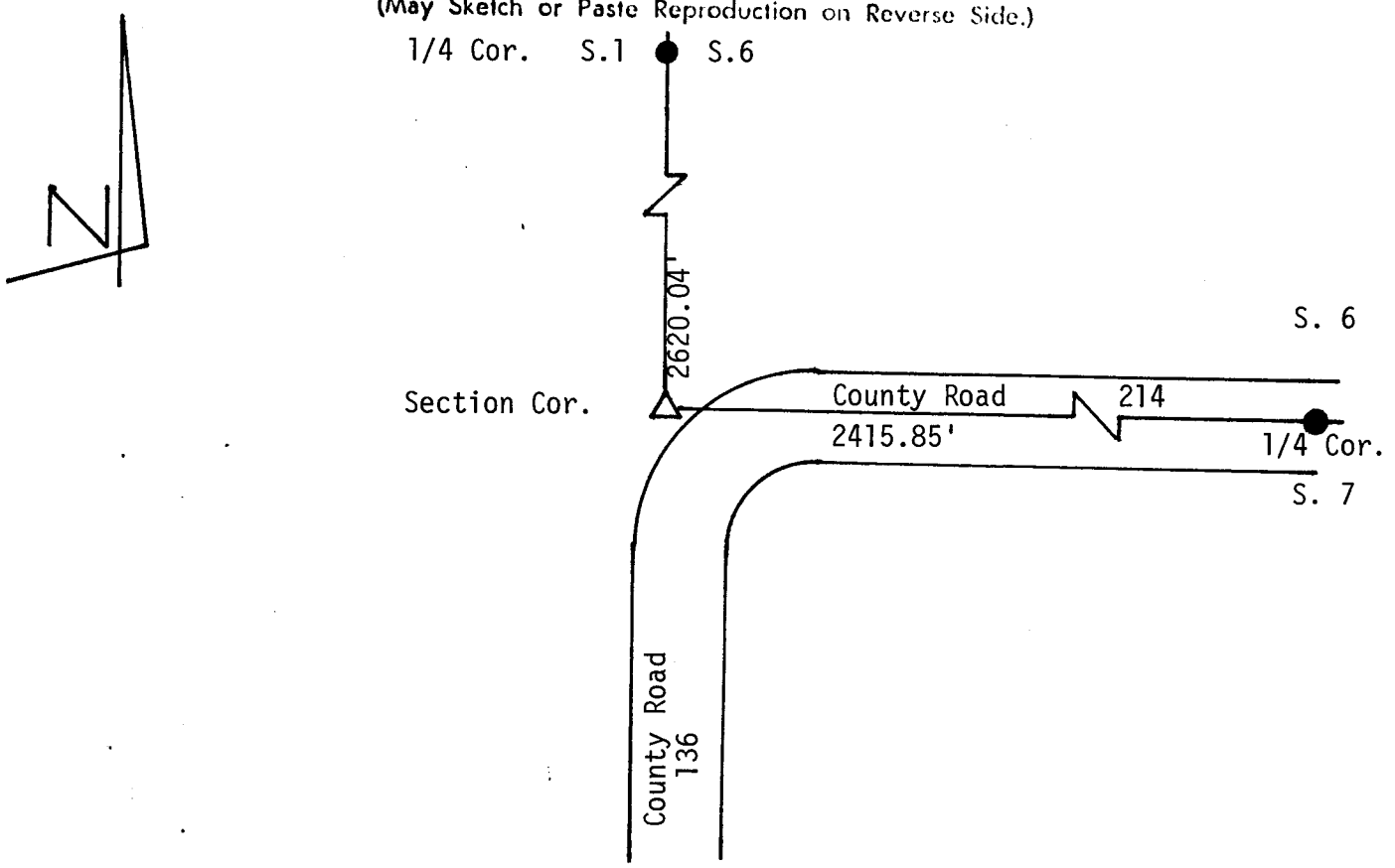


G.L.O.: 16" x 10" x 6" Limestone  
 Found: 160d spike as described and used by William D. Braman L.S. 566 in field notes for Go-Forth Estates.

DESCRIPTION OF MONUMENT AND ACCESSORIES ESTABLISHED TO PERPETUATE THE ORIGINAL LOCATION OF THIS CORNER:

160 d spike  
 See ties below

SKETCH, WITH COURSE AND DISTANCE TO ADJACENT CORNER IF DETERMINED IN THIS SURVEY.  
 (May Sketch or Paste Reproduction on Reverse Side.)



I, Glen L. Roberts certify that I have carefully performed or reviewed the work done on the diagrammed corner as reported on this recordation form and approve the same.

*Glen L. Roberts* Wyo. P.E. & L.S. 347  
 Signature of Surveyor Registration No

STATE OF WYOMING,  
 Office of Clerk and Recorder,  
 County of Laramie

**622358**

This "corner record" was filed for record on the \_\_\_\_\_ day of \_\_\_\_\_, 19 \_\_\_\_\_, was noted on the cross-index plat and is assigned page No. E-1, in book No. 14-64.

County Official			
Cross Index No. ....	T. ....	R. ....	Mer. ....
.....	T. ....	R. ....	Mer. ....
.....	T. ....	R. ....	Mer. ....
.....	T. ....	R. ....	Mer. ....
.....	T. ....	R. ....	Mer. ....
.....	T. ....	R. ....	Mer. ....
.....	T. ....	R. ....	Mer. ....

*E1 14-64*